

KEY TO BUILDINGS

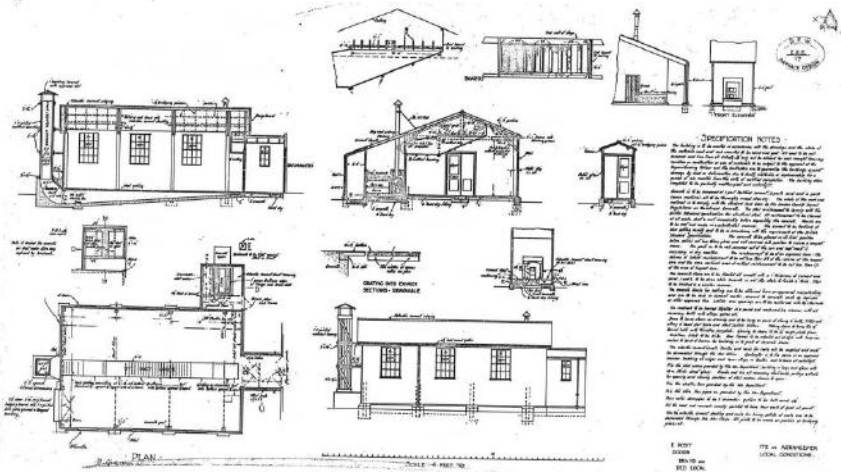
1 aircraft shed	27 women's hostel
2 aircraft shed	28 women's hostel
3 workshops	29 women's hostel
4 dope shop	30? senior NCOs' quarters
5 unknown	31 officers' quarters
6 technical stores	32 officers' quarters
7 ? ammunition store	33 officers' quarters
8 blacksmith's shop	33A toilets and washroom
9 m.t. sheds	34 officers' mess
10 CO's car garage	34A ?toilet block
11 store (not completed by 1919)	36 men's huts
12 unknown	36 men's huts
13 ?guardhouse	37 men's huts
14 unknown (built after 1910)	37 men's huts
15 offices	39 men's huts
16 regimental institute	40 men's huts
17 pilots' ready room	41 men's huts
18 fuel and coal store	42 men's huts
19 unknown	43 men's huts
20 recreation hut	44 unknown
21 unknown	45 reception station
22 water tower	46 generator building
23 reservoir	47 ?parade ground podium
24 women's hostel (not completed by 1910)	
25 women's hostel (not completed by 1916)	
26 women's hostel (not completed by 1916)	











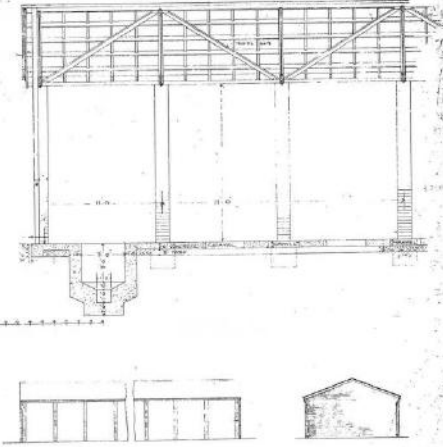
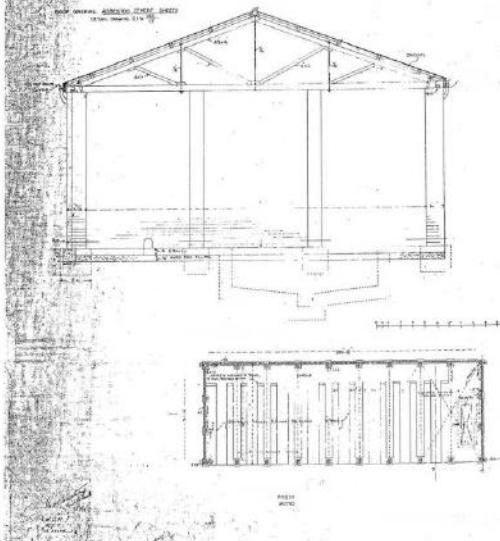
DESCRIPTION NOTES

The building is to be erected on a concrete foundation. The walls are to be constructed of brick or concrete blocks. The roof is to be gabled and covered with asphalt shingles. The chimney is to be constructed of brick and covered with a metal cap. The building is to be finished with a smooth plaster and painted. The floor is to be concrete. The building is to be erected on a level site. The building is to be erected on a lot of 1000 square feet. The building is to be erected on a lot of 1000 square feet. The building is to be erected on a lot of 1000 square feet.

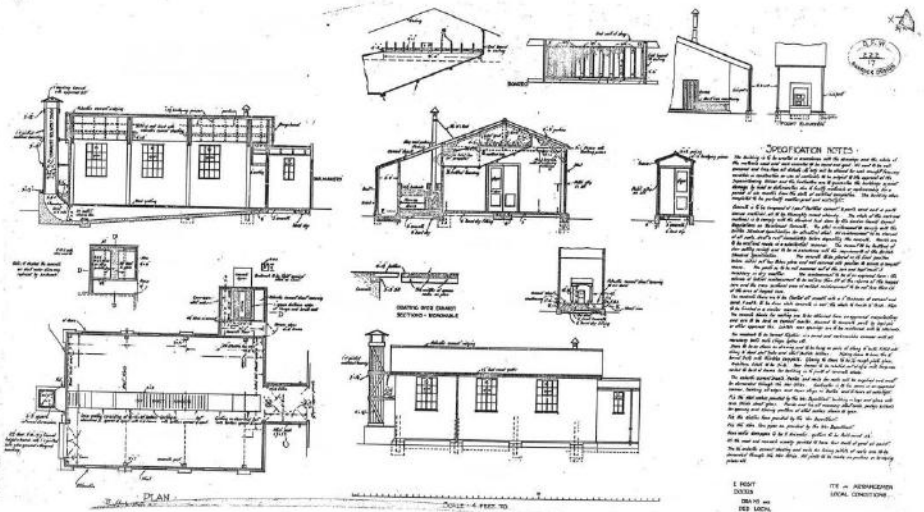
1 FOOT
SCALE
SEE PLAN

ITS - ARCHITECTS
LOCAL CONDITIONS

AIRCRAFT ACCEPTANCE FOUR



1 FOOT
SCALE
SEE PLAN

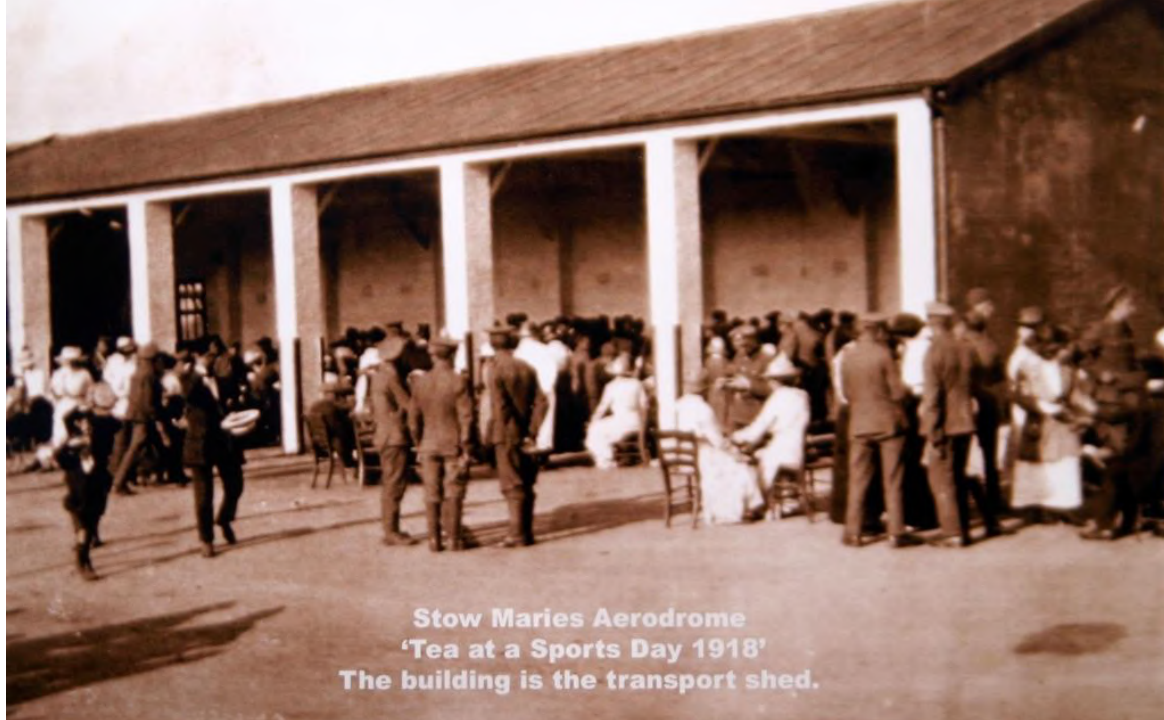


DESCRIPTION NOTES

The building is to be erected on a concrete foundation. The walls are to be constructed of brick or concrete blocks. The roof is to be gabled and covered with asphalt shingles. The chimney is to be constructed of brick and covered with a metal cap. The building is to be finished with a smooth plaster and painted. The floor is to be concrete. The building is to be erected on a level site. The building is to be erected on a lot of 1000 square feet. The building is to be erected on a lot of 1000 square feet. The building is to be erected on a lot of 1000 square feet.

1 FOOT
SCALE
SEE PLAN

ITS - ARCHITECTS
LOCAL CONDITIONS



**Stow Maries Aerodrome
'Tea at a Sports Day 1918'
The building is the transport shed.**



**Stow Maries Aerodrome
Officers Mess looking north
(Original picture is double exposed showing a Sopwith Camel)**

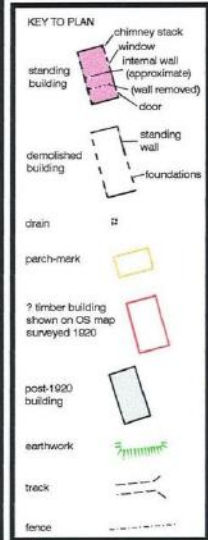












KEY TO BUILDINGS

1 aircraft shed	27 women's hostel
2 aircraft shed	28 women's hostel
3 workshops	29 women's hostel
4 dope shop	30? senior NCOs' quarters
5 unknown	31 officers' quarters
6 technical stores	32 officers' quarters
7 ? ammunition store	33 officers' quarters
8 blacksmith's shop	33A toilets and washroom
9 m.t. sheds	34 officers' mess
10 CO's car garage	34A ?toilet block
11 store (not completed by 1919)	36 men's huts
12 unknown	36 men's huts
13 ?guardhouse	37 men's huts
14 unknown (built after 1910)	38 men's huts
15 offices	40 men's huts
16 regimental institute	41 men's huts
17 pilots' ready room	42 men's huts
18 fuel and coal store	43 men's huts
19 unknown	44 unknown
20 recreation hut	45 reception station
21 unknown	46 generator building
22 water tower	47 ?parade ground podium
23 reservoir	
24 women's hostel (not completed by 1910)	
25 women's hostel (not completed by 1916)	
26 women's hostel (not completed by 1916)	





SQUADRON OFFICES

MUSEUM



AGENTS
The Royal Air Force Museum
RAF Museum London
RAF Museum Midlands
RAF Museum North East
RAF Museum North West
RAF Museum South East
RAF Museum South West
RAF Museum West Midlands
RAF Museum Yorkshire



































17





Stow Maries Aerodrome
'Tea at a Sports Day 1918'
The building is the transport shed.



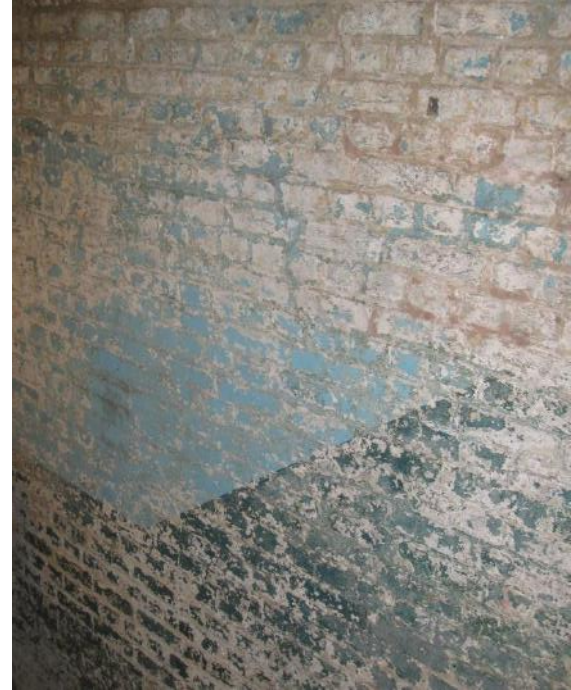




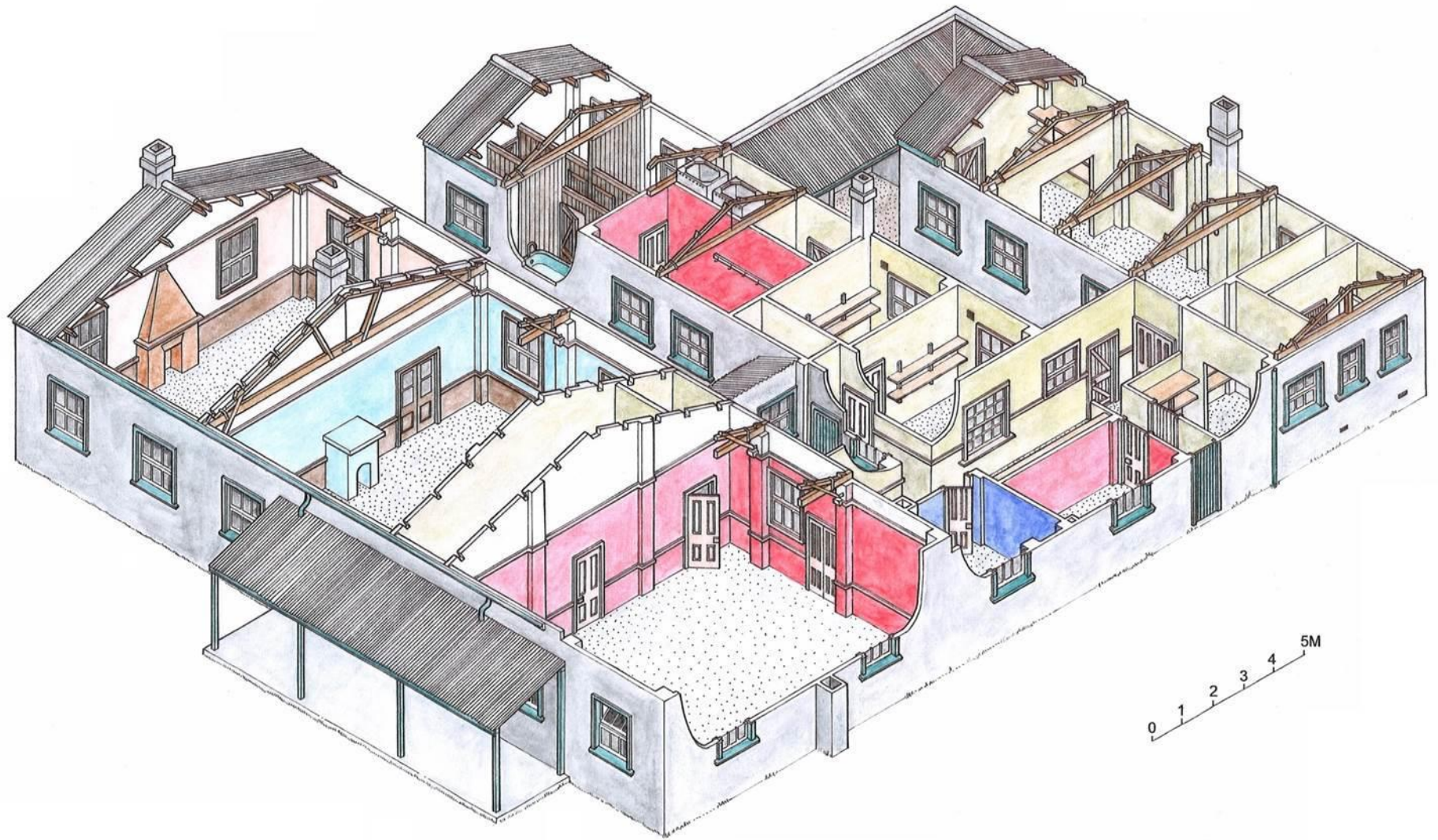








THE OFFICERS' MESS AT STOW MARIES GREAT WAR AERODROME
ISOMETRIC CUTAWAY RECONSTRUCTION
© TIM HOWSON 2018





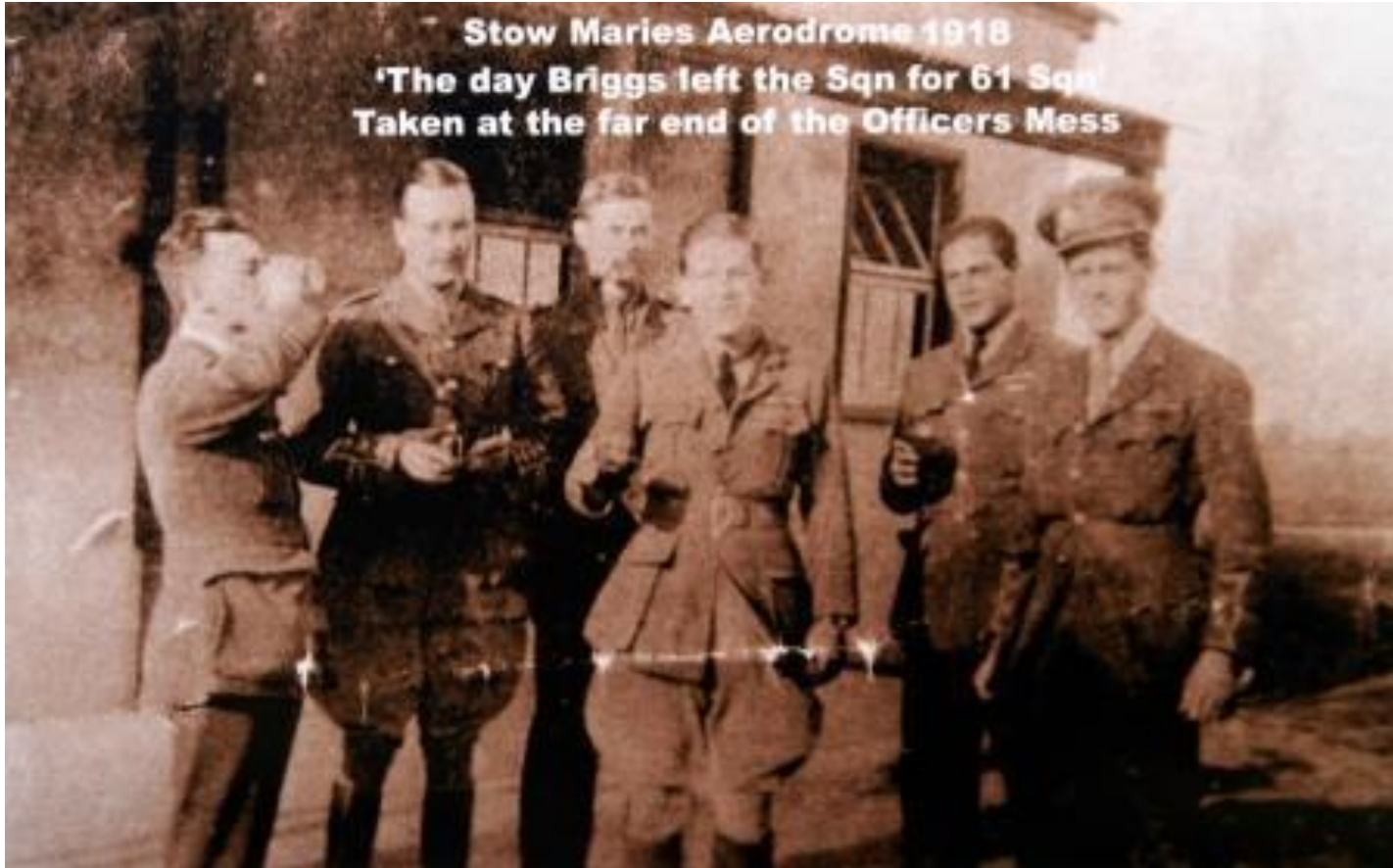




C

PILOT'S READY ROOM

Stow Maries Aerodrome 1918
'The day Briggs left the Sqn for 61 Sqn'
Taken at the far end of the Officers Mess









RO... ENGINEERS





