

# Teachers' notes

## Kenley Revival Project



**There are 12 regular size metal tins with various animals/plants on**

**There is 1 small metal tin with a picture of the sun**

Please use the metal tins and the patches of artificial grass for Activity 2 in your workbook.



The patch of artificial grass represents the producers and needs to be placed in front of you. Use the big tins with the wildlife images to build the food pyramid on top of the artificial grass patch. The smaller tin shows the sun sticker which needs to be placed next to the food pyramid because it is essential for all trophic levels.

There are many ways you can use the resources in this loan box, depending on the type of outdoor space you have access to. We would recommend arranging a trip to a local woodland, meadow or park where you can go bug hunting using all of the equipment included. Alternatively, the school playground or garden will work too.

We recommend letting the students "hunt" for a food web. Split the class in 2 groups and each group could search for plants/animals which belong to a certain trophic level.

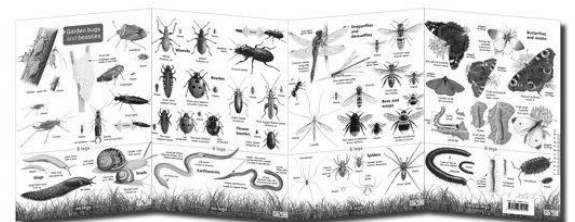
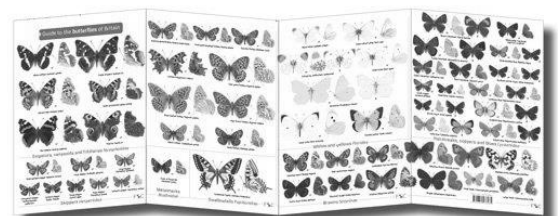
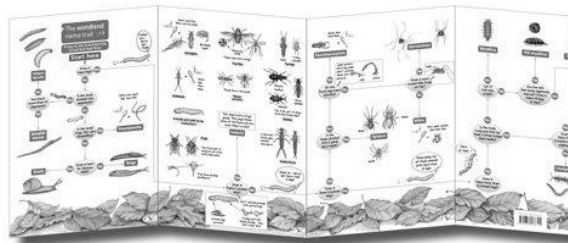
One group can look for different plant species and use the appropriate ID card (see below). You can let the students e.g. look for certain butterfly food plants. Two groups could look for insects to represent the primary and secondary consumers. One group could watch out for birds and use the bird ID chart and try to identify them. At the end the students have to present their findings to the other students and explain why they belong to the trophic level and identify the species.

Afterwards you can give every student the chance to do a bug hunt and have a closer look at those interesting creatures.

### **There are four bags in the loan box**

We suggest splitting your class into five groups and giving each group a bag of equipment to share. Each bag contains:

- **4 x ID cards: these can all be used on the same outing or you can choose just one depending on your activity and habitats, this is up to the teacher.**
- Top 50 garden birds
- Woodland name trail (minibeasts)
- Butterfly ID chart
- Bugs on bushes



- **1 x sweep net: 1 per box**

These are used in meadows and long grass to catch the bugs here. Hold the net in front of you and sweep it side to side in a figure of 8 in front of you whilst slowly walking forward for

about 5 'sweeps'. Try to keep the net in the grass. Then empty the net into a tray but tipping it inside out and see what you've found.



- **5 x white tray: 1 per group**

The students can put anything interesting they find into the tray from bug hunting, sweep netting or tree shaking.



**Additionally in the box there are:**

- **1 x Learning with Nature: A How-to Guide to Inspiring Children Through Outdoor Games and Activities**

This book is full of lots of different ideas for things you can do with your students. We have added it for the teacher to get inspiration and ideas of what they can do with the students outside the classroom, now or in the future.

